



## Woodview Close , High Wycombe HP12 4YH

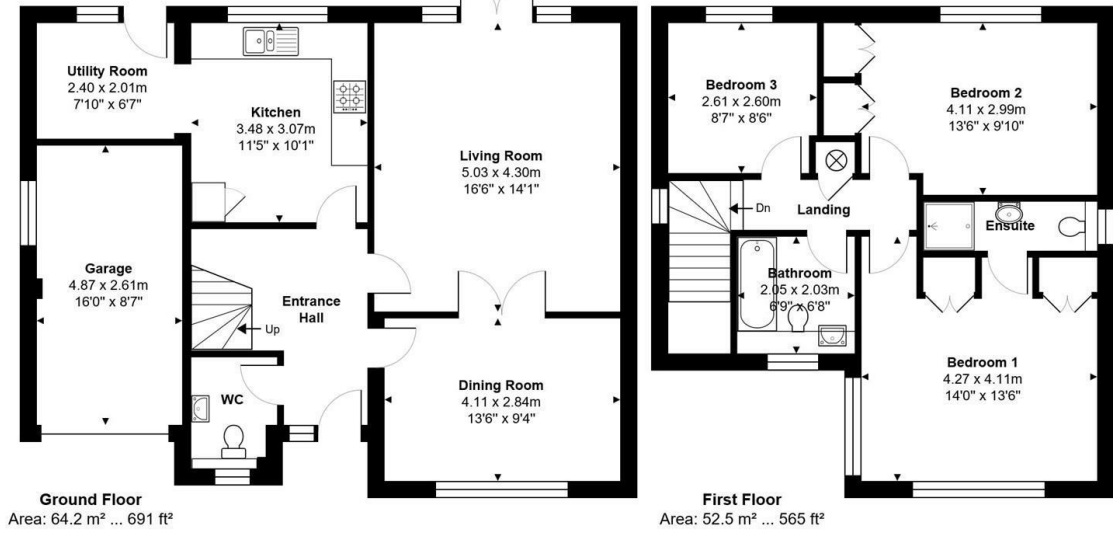
- Modern detached house
  - 2 Reception rooms
  - Council Tax Band D
    - Shower
    - Garage
- 3 Double Bedrooms
  - 2 Bathrooms
  - Part furnished
    - Sep WC
    - Parking

**£2,250 Per Month**

Local Authority **Wycombe District Council**  
Council Tax Band **D**  
EPC Rating

## 2 Woodview Close, High Wycombe, HP12 4YH

Total Area: 116.7 m<sup>2</sup> ... 1256 ft<sup>2</sup> (excluding garage)



Whilst every attempt has been made to ensure the accuracy of the floor plans contained here, measurements of doors, windows and rooms are approximate and no responsibility is taken for any error, omission or mis-statement. These plans are for representation purposes only.

**Head office Office**  
Red Lion House, 600 London Road, High  
Wycombe, Bucks, HP11 1EX

**Contact**  
01494 472846  
[contact@paulkinghamlettings.com](mailto:contact@paulkinghamlettings.com)

Agents Note: Whilst every care has been taken to prepare these particulars, they are for guidance purposes only. All measurements are approximate and for general guidance purposes only and whilst every care has been taken to ensure accuracy, they should not be relied upon and potential buyers/tenants are advised to recheck the measurements.

